



the cotton thread

Border Rivers, St George and Dirranbandi

September 2020



Early-plant cotton out of the ground in St George. Rob Gracie, Sagu Cotton, planted Sicot 746B3F on September 3rd and first true leaves were emerging when photo was taken on 18/9/20.

Season Kicks Off

As the 2020/21 cotton season gets underway, the most recent edition of the [CottonInfo Moisture Monitor](#) continues to indicate a positive outlook for rain in the cotton production areas over the coming months.

Some “early-bird” plantings have gone in around St George however the main plantings in the Balonne are expected to occur throughout October. Indications are that MacIntyre growers will hold off planting until late October/November hopefully allowing the predicted favourable weather conditions to “show their hand”.

Soil temperatures in the Balonne and MacIntyre have returned to “adequate” levels after dipping below the targeted 14 degrees recently. For CSD members, soil temperatures can be viewed on the [CSD website](#).

The water situation remains mixed across the Balonne and MacIntyre regions. Beardmore Dam in St George is around 60% while dams supplying the MacIntyre region have risen further but remain low with Pindari around 17% and Glen Lyon around 15%. Several weather sites are optimistic for rainfall events during the second week of October which may influence planting decisions should these predictions hold.

Preliminary estimates indicate plantings in the Balonne region (St George, Dirranbandi, Thallon) could be around 30,000ha while the

Source	Temp Forecast	Precipitation outlook				
		Emerald	Sth Q'ld	N-NSW	C-NSW	S-NSW
ACCESS-S	Cooler	Above normal Oct/Nov/Dec	Above normal Oct/Nov/Dec	Above normal Oct/Nov/Dec	Above normal Oct/Nov/Dec	Above normal Oct/Nov/Dec
UK Met	Cooler	Above normal Oct/Nov/Dec	Above normal Oct/Nov/Dec	Above normal Oct/Nov/Dec	Above normal Oct/Nov/Dec	Above normal Oct/Nov/Dec
IRI NMME	Cooler	Above normal Oct/Nov/Dec	Above normal Oct/Nov/Dec	Above normal Oct/Nov/Dec	Above normal Oct/Nov/Dec	Above normal Oct/Nov/Dec
ECMWF	Cooler	Normal	Normal	Above normal Oct/Nov/Dec	Above normal Oct/Nov/Dec	Above normal Oct/Nov/Dec
CMCC	Normal	Above normal Oct/Nov/Dec	Above normal Oct/Nov/Dec	Above normal Oct/Nov/Dec	Above normal Oct/Nov/Dec	Above normal Oct/Nov/Dec
JMA	Cooler	Above normal Oct/Nov/Dec	Above normal Oct/Nov/Dec	Above normal Oct/Nov/Dec	Above normal Oct/Nov/Dec	Above normal Oct/Nov/Dec



MacIntyre may be as low as 2,000ha without significant rainfall or dam inflows.

Running On-Farm Trials

Conducting on-farm trials can be a good way to confirm or dispel theories drawn from observations or demonstration tests where a product or technique is tried “on top of” normal grower practice. However, outcomes from these are often disputed or marred by a range of factors, beyond the treatment, that are considered to influence the result or outcome. To help growers gain more value from conducting on-farm trials, the CottonInfo team have put together some [tips for conducting trials](#). These are summarised below:

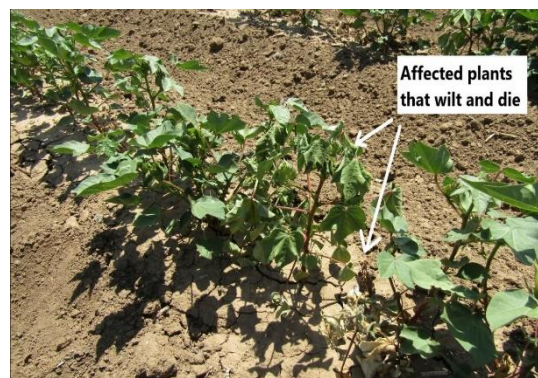
- Keep the question simple
- Aim for only one or two possible outcomes
- Have a nil treatment (control strip)
- Replicate treatments
- Randomise treatments
- Conduct on a consistent and uniform site
- Mark or geolocate treatments
- Ensure you can measure the result

For more detail and links to further information on conducting trials, click on the link in the above paragraph.

Reoccurring wilt: Updated Fact sheet available

In the September newsletter we covered the emergence of a potentially new disease “Reoccurring Wilt”. This was supported by a webinar covering what is currently known about the disease. In addition to this, the [CottonInfo Fact sheet on Wilt diseases](#) has

been updated to provide information on this new disease.



Have you seen fields with the following symptoms?

- The odd plant or patches of plants that wilted and suddenly died with dead leaves usually remaining on the plant.
- Reoccurring patches of dying plants getting larger over past seasons with no explanation for plant death i.e. seasonal conditions.
- Dying plants can be amongst healthy plants.
- Bronzing of leaves and petioles.

- Reddening of the roots and root decay i.e. if plants are pulled out of the soil, the taproot snaps due to root decay.
- May see reddening of the vascular tissue.
- Stem canker/lesions may be present.

Keep an eye out for these symptoms this coming season. If you have concerns or plants expressing symptoms, contact your state pathologist:

QLD DAF: Dr Linda Smith 0457 547 617
NSW DPI: Dr Duy Le 0439 941 542

CottonInfo Blog

[Plant health top tips - September:](#)

Cornerstones of integrated disease management

Diseases can reduce yield, increase the cost of production and influence how growers and consultants manage their properties, with farming practices having a significant effect on the spread and severity of diseases present.

Cotton pathologist, Dr Linda Smith from QDAF outlines her three key practices that form the cornerstone to an integrated disease management strategy:

1. Proper Identification
2. Understand the pathogen life cycle
3. Record keeping

Follow the link at the top of this section for more detail.

CSD E&D Update September 2020

At this stage, for the 2020-21 season, irrigated variety trials are planned to be located at Dirranbandi, St George, Boggabilla, North Star and Texas.

- Ambassador Network fields will be assessed at these locations + south Talwood and North Star.
- Currently working through requirements for a potential site to look at lines of XtendFlex material in the Macintyre.
- Verticillium Box trials and population trials are planned in the east.
- Several locations will also include the new variety Sicot 606B3F for evaluation.
- A planting speed trial in cooperation with Vanderfield St George will be held on Oct 7th.
- Any dryland opportunities will be subject to availability.
- If you have any ideas or suggestions for areas of focus, please contact your CSD representative, Chris Teague.

The CSD website has had a major upgrade over the last few months, members can access more detailed information than ever before.

At this time of year, the soil temperature network is popular, as the season progresses the cotton field weather network and Day Degree calculator (DDC) is available at any time for real time data. Additionally the DDC has a handy 'seasonal comparison' tab which indicates this season progress versus the previous, and a download function to allow an excel download of daily min, max, DD

accumulation, rainfall, radiation and longer term means for greater convenience.



The FastStart cotton program provides practical information on key management steps to achieve an optimum plant stand, further is the **FastStart Cotton Establishment Awards**. Easy to enter and has a ripper of a travel prize on offer, check out what you need to know at <http://faststartcotton.com.au/faststart-awards/>

QR Code on Cotton Seed Bags

This season a QR code is located on seed bags – this can be read with a phone camera or QR code scanner, assuming there is internet access. This should return a Statement of Seed Analysis. In the absence of the QR code reader the Auslot number can be entered into the website to obtain this valuable germination info, seed count etc.

Planting Green Light?

With planters starting to move it is a timely reminder to ensure that you have a green light for planting <https://www.csd.net.au/green-light-for-planting>, ideally ensure that field soil temperature at 10 cm depth is above 14°C at 8am (AEST) and that forecast average temps for the week following are on a rising plane. The soil temperature network provides a handy 7 day, Day Degree outlook calculation that helps with this outlook – ideally 80 Day Degree accumulation in the 7 days post seed imbibition is considered ideal. The outlook for

this week has certainly improved on that of last week.

CRDC news

News from CRDC includes:

- The CRDC supports an International Cross Industry project to combat Fall Armyworm
- CRDC with Cotton Australia are working with international bodies to align sustainability impact indicators and metrics globally.
- Regional Wellbeing survey is underway
- CRDC to support the Satacrop website which shows crop locations.
- Proposals from the EOI for implementation of a spray drift warning system are under consideration.

For more details on these, click [here](#).

COTTON AUSTRALIA CORNER

Cotton Matters – key points

- AgSkilled 2.0 training programme launched in NSW
- CA call for increased cotton education in schools.
- Rural people encouraged to seek mental health support following recent RUOK day
- From Nurse to cotton farmer – story of Tamara Uebergang
- Regional wellbeing survey underway
- Kmart campaign to promote sustainably sourced cotton.
- Southern Valley CGA start social media challenge to support Mungindi after fire destroyed their local supermarket and butcher.
- Fatigue risk warning for cotton farms



- RIC drought and Agbiz loan terms change on September 30.
- Services and support available to QFF members
- Stephanie Devine (the Very Good Bra) wins Good Design Award
- For further information click [here](#).

What's On:

7th October:

- 10am Vanderfield ExactEmerge planter day
-

8th October:

- St George CGA AGM, 10am
AgNVet/QC, Thallon Road

Andrew McKay

Regional Extension Officer - Border Rivers, St George & Dirranbandi | CottonInfo

M 0407 992 495 | **E**

andrew.mckay@cottoninfo.net.au | **W**

www.cottoninfo.com.au

Disclaimer:

The contents of this newsletter are a general guide only, not comprehensive or specific technical advice.

Circumstances vary from farm to farm. To the fullest extent permitted by law, CSD expressly disclaims all liability for any loss or damage arising from reliance upon any information, statement or opinion in this presentation or from any errors or omissions in this document.