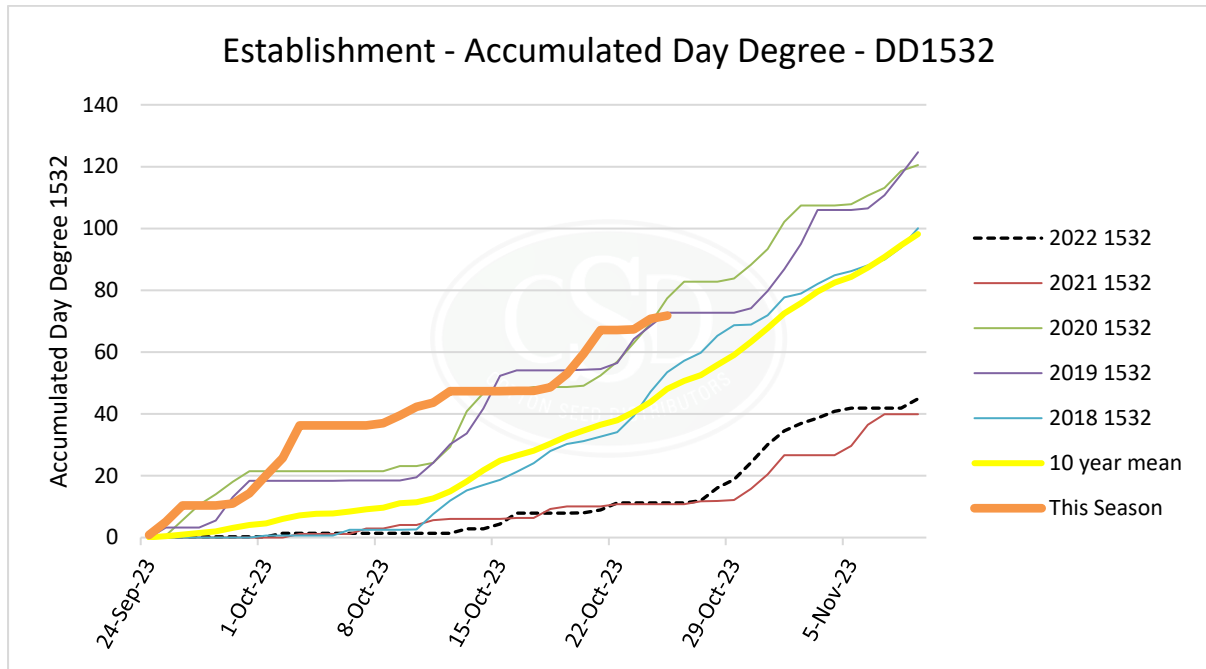




the cotton tale

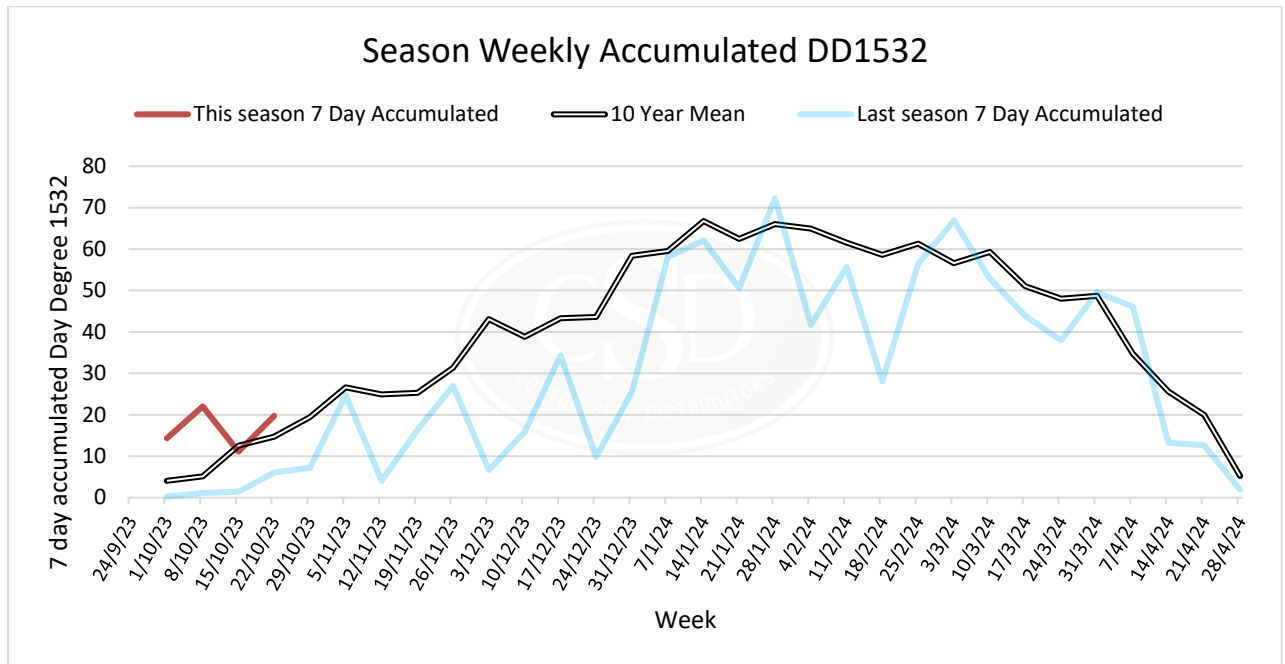
October 2023



The above graph indicates that this season is potentially the best start in the last five seasons and now running very similar to 2019/20 and 2020/21. The stepped nature of the orange line shows the cold fronts coming across and stalling the accumulation of day degrees. So day degrees are up compared to the last two seasons but unfortunately so are cold shocks.

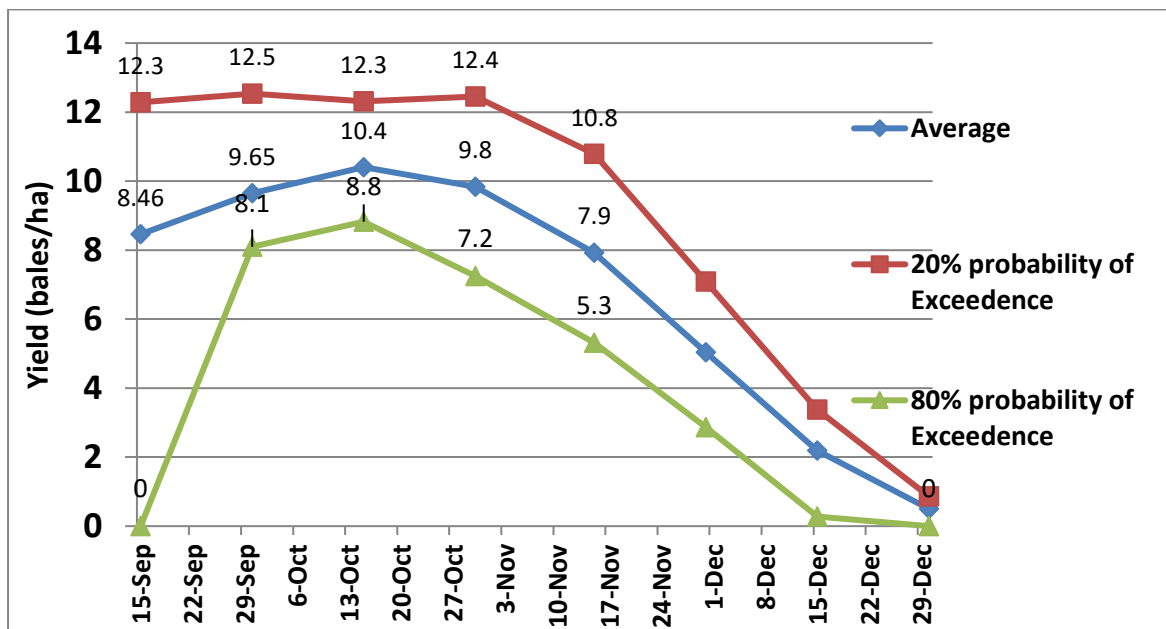
There has been some fields replanted this week as timing of irrigation was followed with a run of below average temperatures. Difficult to get right as temperatures can change quickly with our spring weather patters and October is getting away.

It is pleasing to see the seasonal weekly day degrees (below graph) staying above the average and well above last season.



Planting time and the season ahead

Looking at the Griffith Ozcot model below, average and above average yields are maintained up until the end of October. Looking back to last season the seasonal forecast was indicating we were more than likely to be heading for the 80% exceedance bottom line with cooler and wetter conditions.



The 2023 October Moisture Manager report by Jon Welsh (available to CottonInfo subscribers) indicates we will be neutral for rainfall and warmer over the next three months. Look out for updates on this.

[Subscribe | CottonInfo](#)

Seasonal Model Survey (Nov-Dec-Jan)

A shift in sentiment away from drier-than-normal probabilities occurred over the last month. Models now consistently favouring neutral conditions for NSW growing areas, with slightly less confidence for CQ during the same period. Temperature predictions show a similar trend for warmer-than-normal conditions.



Source	Temp Forecast	Precipitation outlook				
		Emerald	Sth Q'ld	N-NSW	C-NSW	S-NSW
ACCESS-S 	Hot	Drier	Neutral	Neutral	Neutral	Neutral
UK Met 	Warmer	Neutral	Neutral	Neutral	Neutral	Neutral
IRI NMME 	Warmer	Neutral	Neutral	Neutral	Neutral	Neutral
ECMWF 	Warmer	Drier	Neutral	Neutral	Neutral	Neutral
CMCC 	Warmer	Neutral	Neutral	Wetter	Wetter	Neutral
JMA 	Warmer	Drier	Drier	Neutral	Neutral	Drier

Cover crop challenge

Common with spray irrigation on the flat there is interest in having some form of wind protection to developing cotton seedlings in surface irrigated row crop fields. It may not be possible on a hill but can the centre of a bed be sown a few months before planting with a cereal and sprayed out? Any ideas or comments welcome.



September Quiz answer Where is this golf course?

Royal Rankin Springs



October quiz – Any idea what these are?



Regards Kieran

Disclaimer:

General guide only, not comprehensive or specific technical advice. Circumstances vary from farm to farm. To the fullest extent permitted by law, CSD expressly disclaims all liability for any loss or damage arising from reliance upon any information, statement or opinion in this presentation or from any errors or omissions in this document