

LOOK OUT FOR EXOTIC COTTON PESTS

Many insect and disease pests of cotton from overseas are a significant threat to Australian cotton production. If new pests find their way to Australia, early detection and reporting is key to their successful eradication.

Tarnished plant bug (a) Western plant bug (b)

Insect: Feeds on squares and bolls

Impact: Abortion of young squares, shrivelled seeds and discolouration of lint

Look for: Discoloured and distorted flowers, leaves and squares, blackening of new growth and dieback



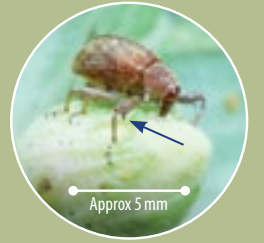
Photos courtesy of (left to right): Barry Freeman; Scott Bauer; Jack Kelly Clark.

Cotton boll weevil

Insect: Larvae develop inside squares and bolls. Adults have a spur on front legs (arrow).

Impact: Square drop and boll rot

Look for: Weevils damaging cotton crops. There are no weevil species known to attack cotton in Australia



Photos courtesy of Clemson University.

Cotton blue disease

Disease: Virus spread by cotton aphid

Impact: Severe stunting, reduced yield and poor quality lint

Look for: Leathery new leaf growth that is intense green-blue with yellow veins and curled margins

Note: Differs from cotton bunchy top disease by lack of leaf mottling



Photo courtesy of Murray Sharman.

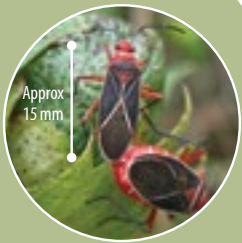
Exotic cotton stainers

Insect: Pierces cotton bolls to feed on seeds

Impact: Discoloured lint, damaged seeds and impacted boll development

Look for: Unusually coloured or patterned stainer species

Photo courtesy of Don Parsons.



Cotton leaf curl virus

Disease: Spread by silverleaf whitefly

Impact: Stunted plants, impaired flowering, boll formation, yield and lint quality

Look for: Cupped leaves, swollen veins and leaf-like growths (enations) along veins



Photos courtesy of Rob Briddon.

Exotic strains of pests and diseases already being managed in Australia can create new threats if introduced from overseas:

- cotton aphid
- fusarium wilt
- silverleaf whitefly
- bacterial blight
- cotton bollworm

Strains present overseas can be more damaging, have greater resistance or be carrying exotic diseases.



Brown marmorated stink bug

Insect: Adults have white bands on antennae, sides of abdomen and legs

Impact: Boll rot, stained lint and shrivelled seeds

Look for: Unusually coloured or patterned stink bugs feeding on bolls

Photos courtesy of (left to right): David Lance; Dominic Reising.

False codling moth

Insect: Pink larvae mine the boll wall then feed on seeds

Impact: Boll rot and damaged seeds

Look for: Tunnel holes in the surface of bolls and secondary infection by diseases



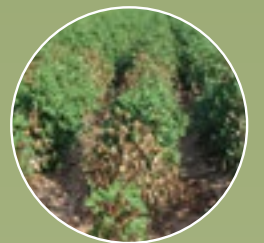
Photos courtesy of (left to right): J.H.Hofmeyr; Marja van der Straten.

Texas root rot

Disease: Infects roots of plants

Impact: Sudden and severe wilting and death of whole plants

Look for: Circular patterns of dead plants in a field with stems girdled at ground level and white to tan fungal strands on roots



Photos courtesy of (left to right): Bill Tyrwhitt; Karen Kirkby.

**IF YOU THINK YOU'VE FOUND AN EXOTIC PEST
CALL THE EXOTIC PLANT PEST HOTLINE**

1800 084 881



Department of
Primary Industries

