



# Macquarie bale up

**MARCH 2020**

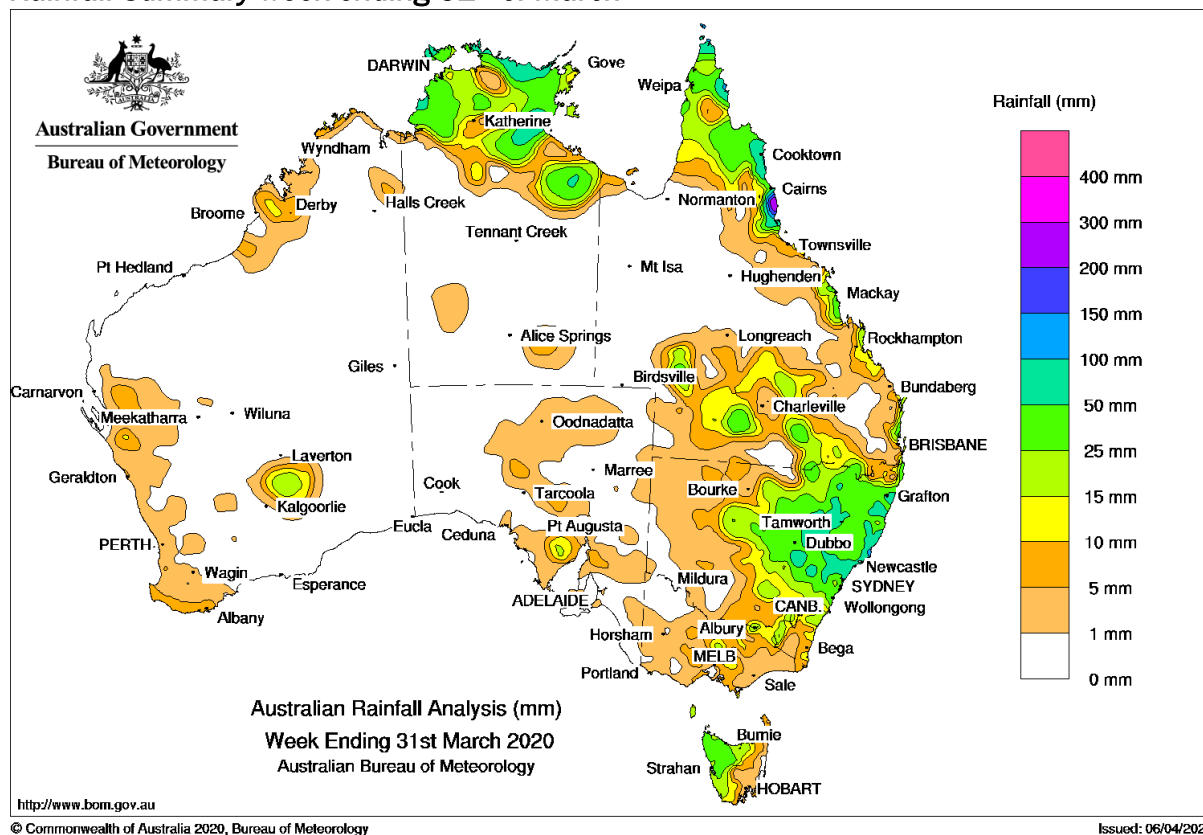
## SEASON SUMMARY

Rainfall has been significant in some areas and most heads are turning towards sowing winter crops. Here is links to the Winter Crop Sowing and weed guides in case you don't have copy.

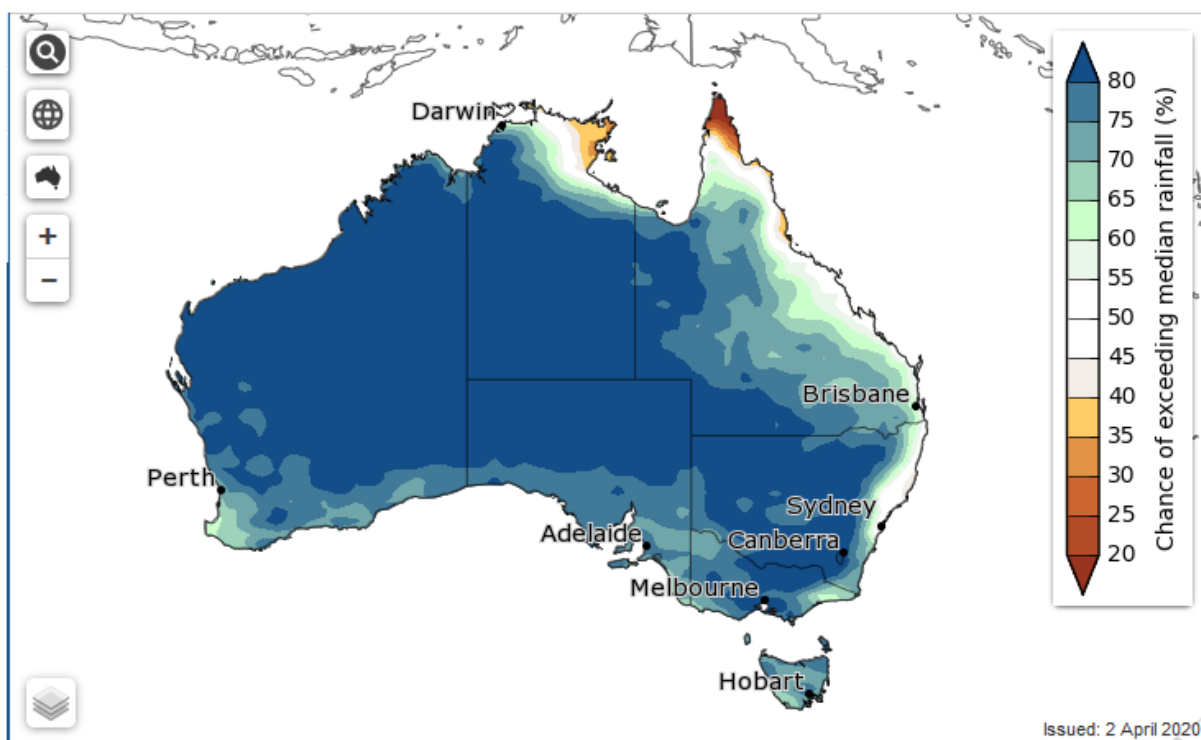
[https://www.dpi.nsw.gov.au/\\_data/assets/pdf\\_file/0003/1208847/Weed-control-for-winter-crops-2020.pdf](https://www.dpi.nsw.gov.au/_data/assets/pdf_file/0003/1208847/Weed-control-for-winter-crops-2020.pdf)

<https://grdc.com.au/resources-and-publications/all-publications/publications/2019/winter-crop-variety-sowing-guide-201>

## Rainfall Summary week ending 31<sup>st</sup> of March



**Fig 1.** <https://www.agriculture.gov.au/sites/default/files/documents/weeklyaustclimatewateragupdate20200402.pdf>



**Fig 2.** <http://www.bom.gov.au/climate/outlooks/#/rainfall/median/monthly/0>

While the rainfall is good news for our winter crop prospects it has been a tough finish for those who have cotton in the ground and are wanting to finish off some vital top crop. For most defoliation is happening as soon as the weather permits.

On a good note the dam levels at the time of writing this report have hit 12% (for the latest information please go to <https://realtimedata.waternsw.com.au/water.stm>). The Macquarie valley also able to access supplementary pumping at the moment for the latest updates make sure you are on their text alert system or go to <https://www.waternsw.com.au/supply/regional-nsw/supplementary>.

### **REGION – Upper Macquarie**

#### **Narromine**

Location	Latitude	Longitude	Date range
NARROMINE AIRPORT	-32.223	148.2292	15 Oct - 06 Apr

	2019	2018	2017	10 year mean
Base 12	2239.5	2369.3	2279.8	2146
DD1532	1374.8	1507.4	1425.7	1332.5
Cold shock days	16	14	15	20.9
Days above 36°C	46	54	48	38.4
Nights above 25°C	7	13	5	4.4
Days above 40°C	22	19	14	10.1
Average temperature (°C)	24.8	25.4	24.9	24.1

**Fig 3.** Day degree summary page (source [csd.net.au/ddc](http://csd.net.au/ddc)) Note this is using the planting date of October 15<sup>th</sup>.

	2019	2018	2017	2016	2015	10 year mean
Base 12	2239.5	2369.3 ▲	2279.8 ▲	2208.8 ▼	2182.0 ▼	2146.0 ▼
DD1532*	1374.8	1507.4 ▲	1425.7 ▲	1326.1 ▼	1384.5 ▲	1332.5 ▼
Cold shock days	16	14 ▼	15 ▼	36 ▲	11 ▼	20.9 ▲
Days above 36°C	46	54 ▲	48 ▲	49 ▲	44 ▼	38.4 ▼
Nights above 25°C	7	13 ▲	5 ▼	8 ▲	1 ▼	4.4 ▼
Days above 40°C	22	19 ▼	14 ▼	16 ▼	6 ▼	10.1 ▼
Average temperature (°C)	24.8	25.4 ▲	24.9 ▲	24.2 ▼	24.4 ▼	24.1 ▼

\* Experimental calculation.

General guide only; not comprehensive or specific technical advice. Circumstances vary from farm to farm. To the fullest extent permitted by law, CSD expressly disclaims all liability for any loss or damage arising from reliance upon any information, statement or opinion on this website or from any errors or omissions on this website.

Climate observations and data are obtained via the State of Queensland SILO patched point dataset.

Fig 4. Narromine seasonal comparison Source [www.csd.net.au/ddc](http://www.csd.net.au/ddc)

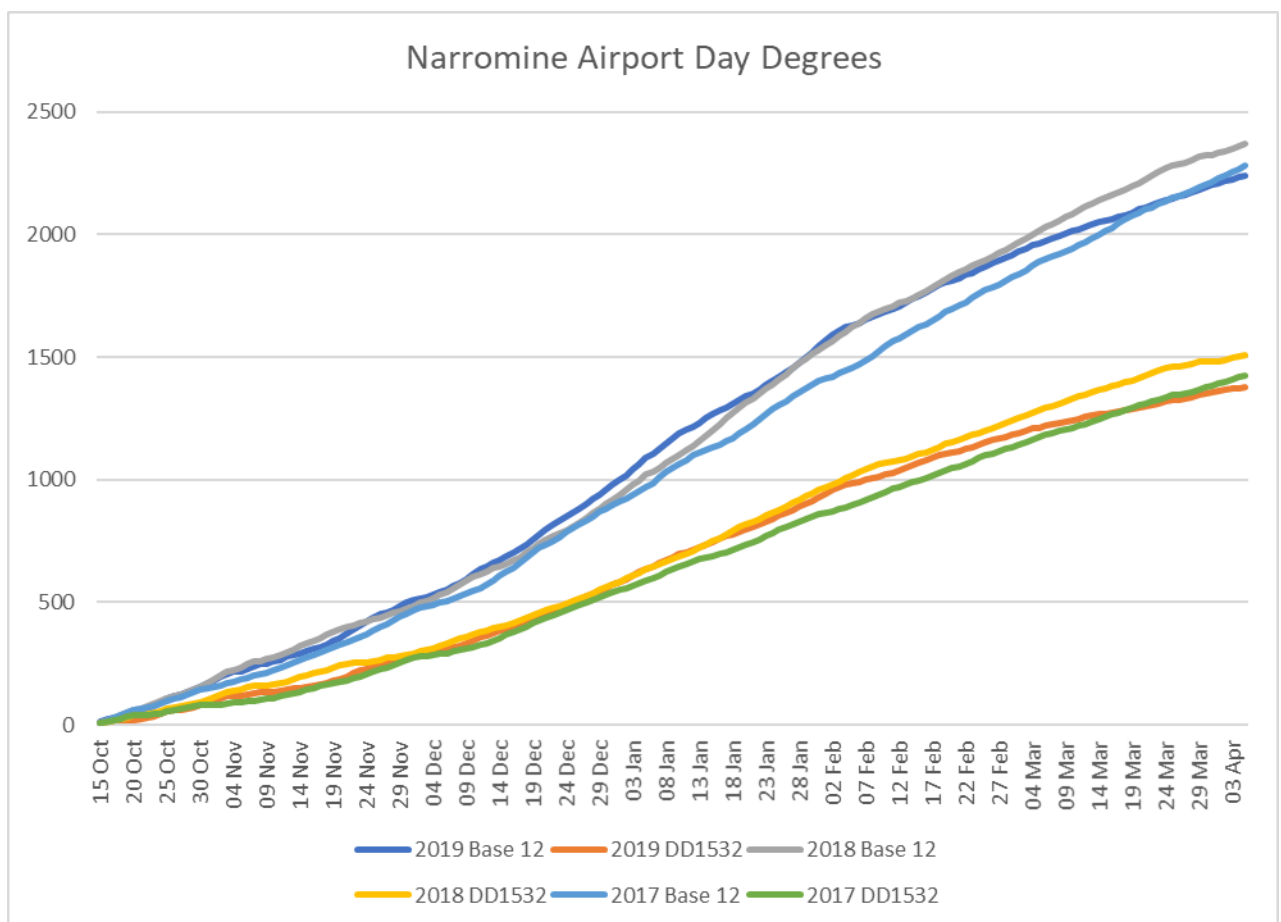


Fig 5. Day Degree comparison using the base 12 and 1532. Source [www.csd.net.au/ddc](http://www.csd.net.au/ddc)

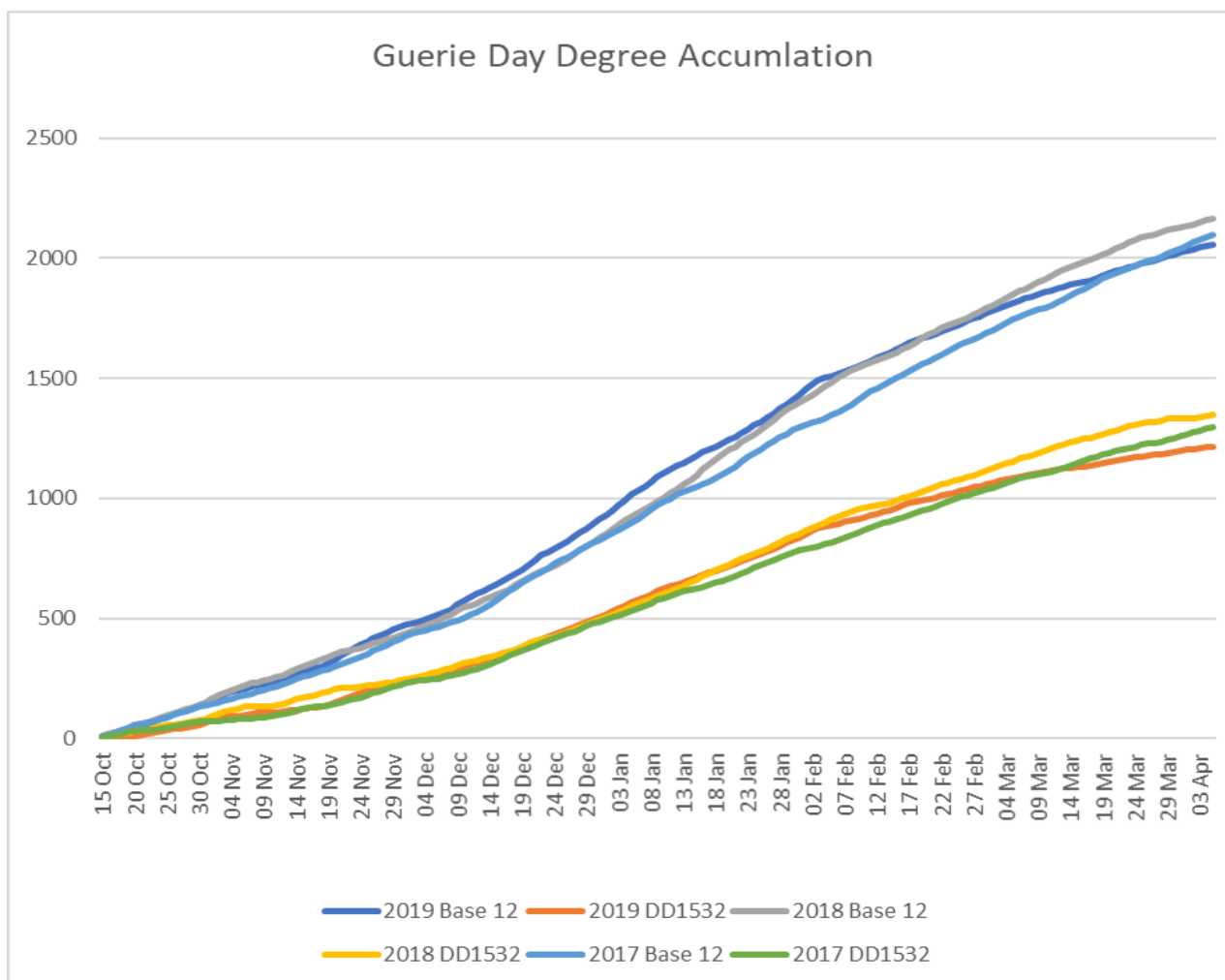


Fig 6. Season summary Geurie NSW : Source [www.csd.net.au/ddc](http://www.csd.net.au/ddc)

## REGION – Upper Lachlan

Forbes

Location	Latitude	Longitude	Date range
FORBES AIRPORT AWS	- 33.3627	147.9205	15 Oct - 06 Apr

	2019	2018	2017	10 year mean
Base 12	2091.4	2214.3	2066.7	2002.4
DD1532	1212.3	1357.8	1223.6	1174.8
Cold shock days	36	26	30	35.3
Days above 36°C	40	43	33	31.3
Nights above 25°C	4	10	3	2.4
Days above 40°C	15	16	12	8.5
Average temperature (°C)	23.6	24.5	23.6	23.1

Fig 7. Day Degree comparison using the base 12 and 1532. Source [www.csd.net.au/ddc](http://www.csd.net.au/ddc)

## FORBES AIRPORT AWS

Date range: 15 October, 2019 to 6 April, 2020 (175 days).

Download

Summary Seasonal comparison

	2019	2018	2017	2016	2015	10 year mean
Base 12	2091.4	2214.3 ▲	2066.7 ▼	2062.7 ▼	2097.1 ▲	2002.4 ▼
DD1532*	1212.3	1357.8 ▲	1223.6 ▲	1181.1 ▼	1278.3 ▲	1174.8 ▼
Cold shock days	36	26 ▼	30 ▼	44 ▲	24 ▼	35.3 ▼
Days above 36°C	40	43 ▲	33 ▼	40	40	31.3 ▼
Nights above 25°C	4	10 ▲	3 ▼	1 ▼	1 ▼	2.4 ▼
Days above 40°C	15	16 ▲	12 ▼	11 ▼	7 ▼	8.5 ▼
Average temperature (°C)	23.6	24.5 ▲	23.6	23.3 ▼	23.9 ▲	23.1 ▼

\* Experimental calculation.

General guide only; not comprehensive or specific technical advice. Circumstances vary from farm to farm. To the fullest extent permitted by law, CSD expressly disclaims all liability for any loss or damage arising from reliance upon any information, statement or opinion on this website or from any errors or omissions on this website.  
Climate observations and data are obtained via the State of Queensland SILO patched point dataset.

Fig 8. <https://www.csd.net.au/ddc/results>

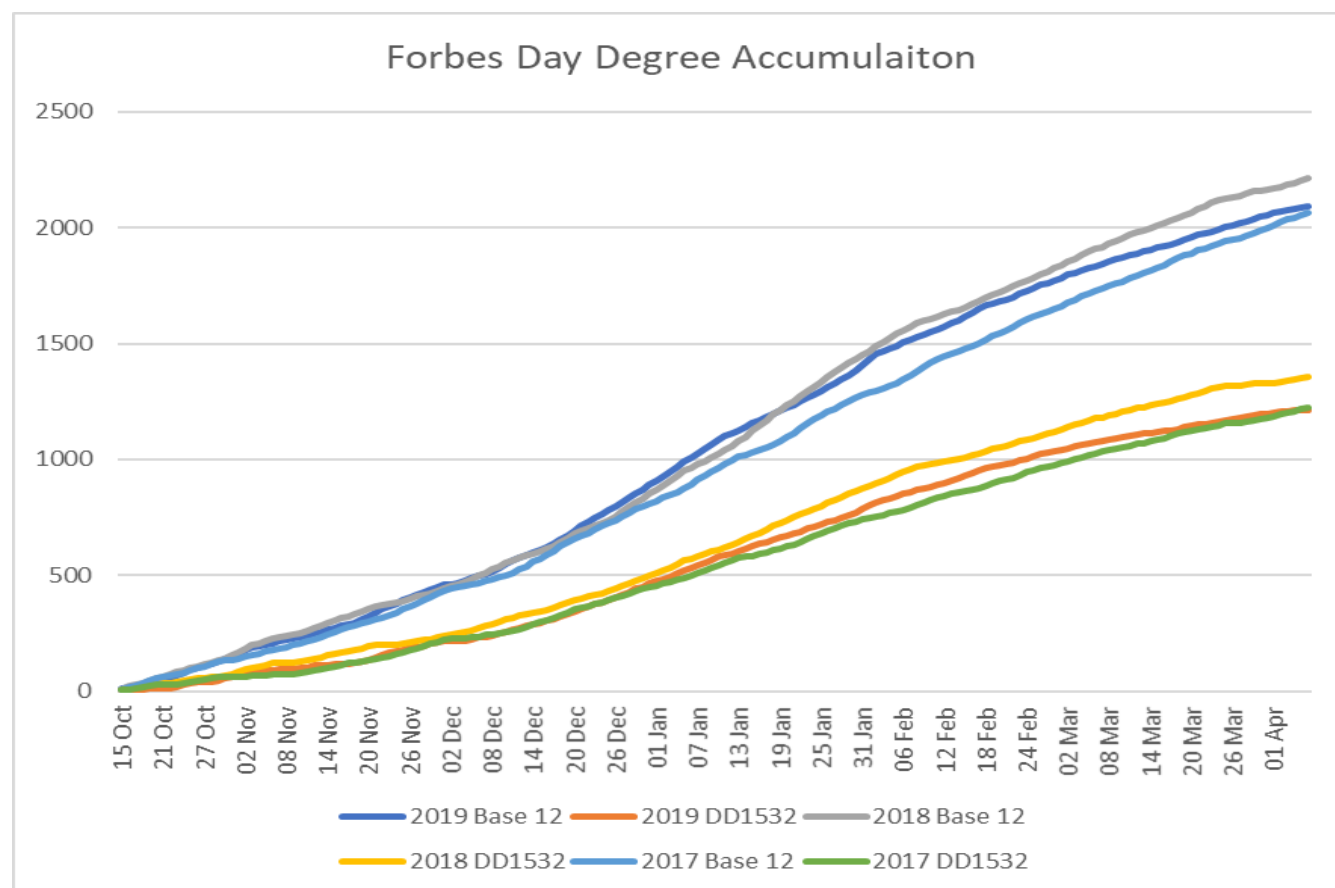


Fig 9. Day Degree comparison using the base 12 and 1532. Source [www.csd.net.au/ddc](http://www.csd.net.au/ddc)



## LATE SEASON SLW MANAGEMENT

From boll opening until leaf drop it is critical that silverleaf whitefly (SLW) are managed to a level that prevents sticky cotton lint.

If numbers have built up or honey dew is starting to accumulate since the pyriproxyfen window closed consider the use of a knockdown product to reduce numbers during boll opening.

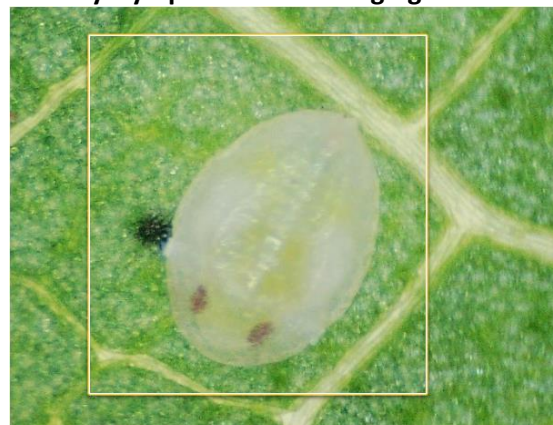
- If you are worried that control might still be necessary before defoliation, products such as spirotetramat (Movento®), diafenthiuron (Pegasus®), acetamiprid/emamectin (Skope®), cyantraniliprole (Exirel®) or dinotefuran (Starkle) should provide effective control for any late season build-up depending on the situations circumstances.
- Remember that the objective is to limit the opportunity for honey dew contamination of the lint. Even mild honeydew can cause problems.

If you have a population and you are wondering how much parasitism is going on just give me a call and I come and do some leaf sampling. I can then take them back and get them under the microscope and work out the levels of parasitism for that sample. Agros can drop me in a sample of 50 leaves and ill do the numbers for them. This also feeds back to researcher Jamie Hopkinson who is working on a project in this space.

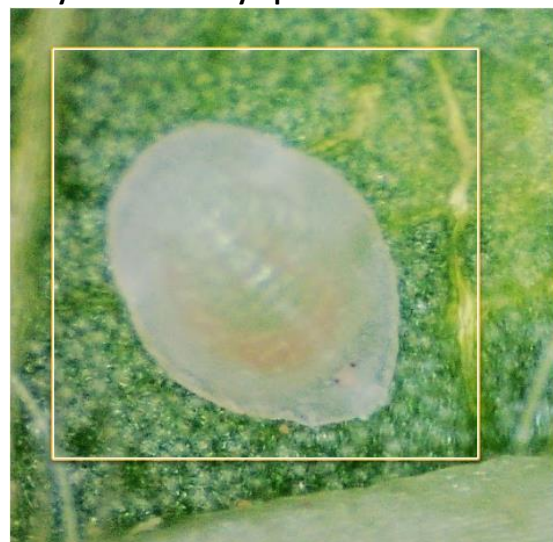
Recent counts that I have done have worked out at 50.82% on the 3<sup>rd</sup> of Feb and 41.53% on the 27<sup>th</sup> of Feb , 64.25% on the 18<sup>th</sup> of March

**Useful SLW CottonInfo publications:** [Avoid a sticky situation](#), [Bringing your crop home: SLW management](#)

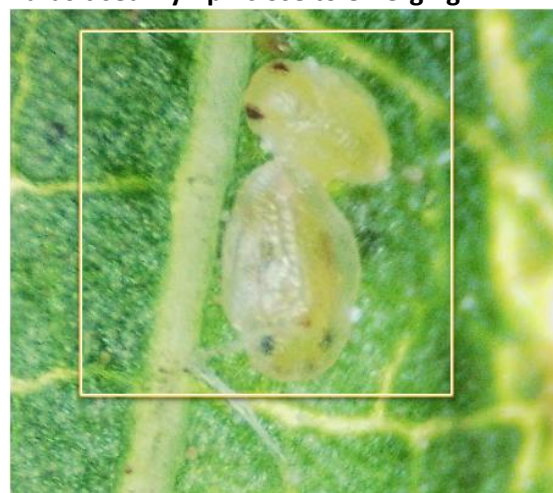
**Healthy Nymph close to emerging**



**Early Parasitised Nymph**



**Parasitised Nymph close to emerging**



Source: CottonInfo REO sampling





## CSD AMBASSADOR UPDATE (MARCH ) –CENTRAL NSW

By Craig McDonald (APRIL 7<sup>TH</sup> 2020)

Crops are progressing with opening of bolls and there are good fruit numbers of up to 175 +/-m. Cut out dates in our trials were around 18/19<sup>th</sup> February in the Upper Lachlan and the cut out dates in the Macquarie varied from the 31<sup>st</sup> January to the 1<sup>st</sup> March. These reflect the staggered crop plantings.

Data collection is continuing in all CSD trials with the end of season snapshots being the next series of collections. This will lead into segmented picking (hand picking of seed cotton from different parts of the plant) as defoliation continues. Normally the Ambassador variety is segment picked at each site. There are two trials in the Upper Lachlan which include a new line, CSX3006B3F, that will also be hand sampled this season.

The crops are at least 14 days behind last season and some defoliation should commence this week.

If growers would like to track their crop through BARRY and Cotton Tracka please contact Craig McDonald CSD Extension and Development Agronomist 0484 513 566 or [cmcdonald@csd.net.au](mailto:cmcdonald@csd.net.au) or Ella Steinfort, CSD E&D Agronomist M. 0428950033 [E.steinfort@csd.net.au](mailto:E.steinfort@csd.net.au)

### Upper Lachlan Cotton Tracka



## Cotton Tracka

POWERED by



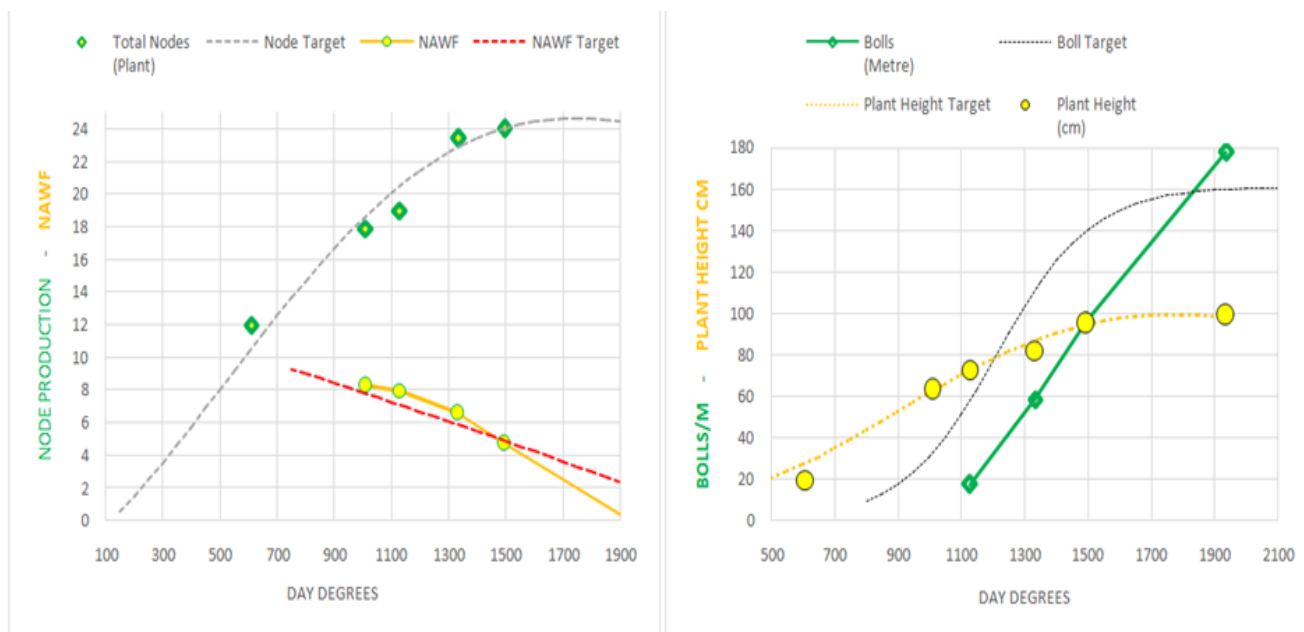
<b>Farm:</b>		<b>Planting Date:</b> 15/10/2019							
<b>Field:</b>		<b>Seed Imbibed Date:</b> 16/10/2019							
<b>Variety:</b> 746 B3F		<b># Days Flowering</b>							
Assessment Date	Day Degree	Total Nodes (Plant)	Total Nodes Target (Plant)	Bolls (Metre)	NAWF	NAWF TARGET	Plant Height (cm)	Plant Height Target	BARRY Yield Prediction
17/12/2019	609	12	10.5				19.8	28.0	
10/8/2020	1010	17.9	18.7		8.3	7.8	63.3	62.8	
15/11/2020	1128	19	20.5	17.7	8	7.1	72.7	72.7	
29/11/2020	1333	23.4	22.9	58.7	6.6	5.9	82.0	86.9	
6/02/2020	1495	24	24.0	96	4.73	4.9	95.0	94.6	
19/03/2020	1936	24.5	24.4	178	0	2.1	99.0	98.4	

#### Disclaimer:

General guide only, not comprehensive or specific technical advice. Circumstances vary from farm to farm. To the fullest extent permitted by law, CSD expressly disclaims all liability for any loss or damage arising from reliance upon any information, statement or opinion in this presentation or from any errors or omissions in this document.

**\*\*Note - Targets indicate Ambassador network 4 year means and are therefore intended as a guide only.**





**Disclaimer:**

General guide only, not comprehensive or specific technical advice. Circumstances vary from farm to farm. To the fullest extent permitted by law, CSD expressly disclaims all liability for any loss or damage arising from reliance upon any information, statement or opinion in this presentation or from any errors or omissions in this document.

**\*\*Note - Targets indicate Ambassador network 4 year means and are therefore intended as a guide only.**

## Macquaire Tracka



# CottonTracka

POWERED by

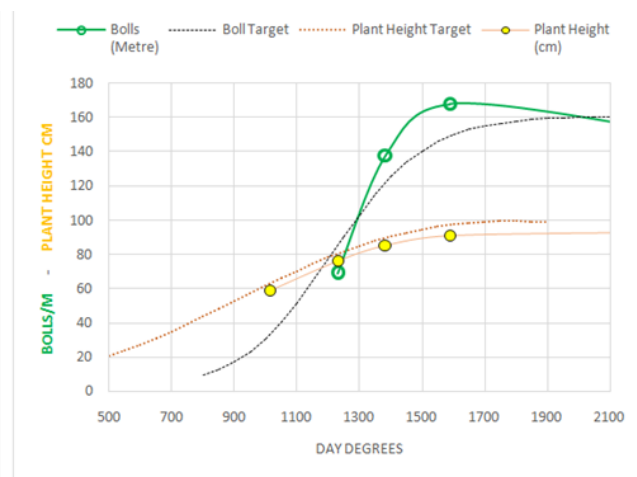
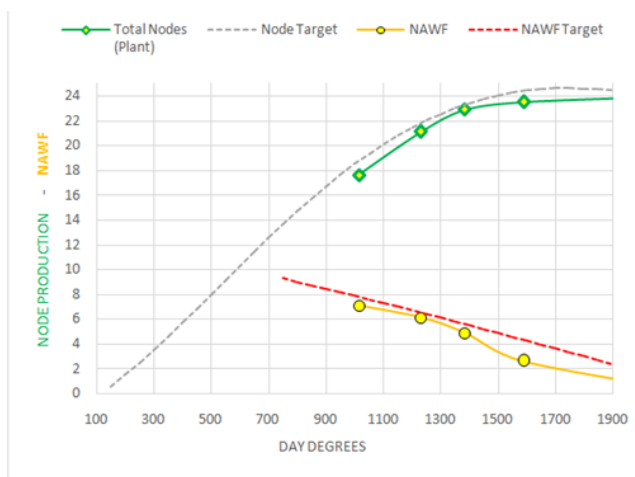


**Farm:**   
**Field:**   
**Variety:** Sicot 746B3F   
**Planting Date:** 14/10/2019   
**Seed Imbibed Date:** 15/10/2019   
**Planting Rate (seeds/m):** 16   
**Plant Stand/m:** 12.3   
**Establishment Percentage:** 77%   
**Irrigated:** ☐ **Dryland:** ☒

Assessment Date	Day Degree	Total Nodes (Plant)	Total Nodes Target	Bolls (Metre)	NAWF	NAWF TARGET	Plant Height (cm)	Plant Height Target	VGR	Days After Imbibed
9/12/2019		10.1					16.9			55
3/01/2020	1014	17.6	18.7		7.1	7.8	59.1	63.2	5.6	
14/01/2020	1231	21.1	21.8	69	6.13	6.5	76.5	80.4		
24/01/2020	1384	22.9	23.3	138	4.87	5.6	85.5	89.7		
3/02/2020	1588	23.5	24.4	168	2.6	4.3	90.9	97.4		
1/04/2020	2200	24	23.6	155	0	0.4	92.8	92.9		







#### Disclaimer:

General guide only, not comprehensive or specific technical advice. Circumstances vary from farm to farm. To the fullest extent permitted by law, CSD expressly disclaims all liability for any loss or damage arising from reliance upon any information, statement or opinion in this presentation or from any errors or omissions in this document.

**\*\*Note - Targets indicate Ambassador network 4 year means and are therefore intended as a guide only.**

## TEMPORARY CHANGES TO WORKING HOLIDAY VISAS

THE Federal Government is making temporary changes to visa arrangements to help farmers access the workforce they need to secure Australia's food and produce supply during the COVID-19 upheaval.

The changes allow those within the Pacific Labour Scheme, Seasonal Worker Program and working holiday makers to continue to work in agriculture and food processing until the coronavirus crisis has passed.

The announcement by Agriculture Minister, **David Littleproud**, will allow Seasonal Worker Programme and Pacific Labour Scheme workers to extend their stay for 12 months to work for approved employers.

Working Holiday Makers will be exempt from the six-month limit with one employer and be eligible for a further visa to continue to work in agriculture and food processing until the coronavirus crisis has passed.

To assist workers with managing the risk of COVID-19 spread the NFF has developed a

COVID-19 Workplace Guide, which has been sent for review by the Chief Medical Officer.

The Guide outlines the considerations for farm business operators when welcoming new workers, addressing accommodation, quarantine and financial support.

It is vital that farm workers have accommodation that enables them to follow social distancing requirements.

It also contains essential information about the tightened social and hygiene practices required on farm and in staff living quarters. This includes how to respond should a worker either be suspected of having the virus or is in fact tested positive.

There is also a section on industrial relations detailing farmers rights and liabilities as employers.

See the *COVID-19 Workforce Guide* at <https://farmhub.org.au/covid-19-nff-workplace-guide/>

Sources: Federal Government, NFF, Grain Central

<https://ministers.dese.gov.au/cash/new-visa-support-australian-farmers>

<https://minister.awe.gov.au/littleproud/media-releases/agricultural-workforce>

<https://www.employment.gov.au/seasonal-worker-programme>

That's it for another gripping edition of the Macquarie Bale Up. Over the next few months I will try and promote any webinars or meetings that are now taking place on video conferencing platforms thanks to our friend "Covid 19". There will be lots of competition in this space so please feel free to give me a call if you have any burning issues you would like me to tackle during this time.

My role is to be your connection to the research community and deliver the research outcomes and findings in an understandable and timely manner, we are still meeting on a regular basis and at this stage I am able to go out and do isolated field work within the valley. I will keep you posted if that changes.

Here is the links page from my last email that outlined some upgrades to the internet and phone packages due to Covid 19

<https://exchange.telstra.com.au/supporting-our-customers-during-covid-19/>

[\*Click here for more details about these extra data offers\*](#)

<https://www.whistleout.com.au/Broadband/Guides/every-telco-COVID-19-coronavirus-assistance-package>

Stay safe and good luck with harvest for those who have cotton in. Here hoping we get sowing soon and winter crops underway. We are lucky to have had the rain we needed to get our local economy back on feet, even if we have to change how we do things pretty drastically.

Here is some ways to remember 2020 so far.....



This also captures the vibe of the year that has been quite well. ↓↓↓↓

<https://www.youtube.com/watch?v=JdMUnZzOfIs>

**Amanda Thomas**

Regional Extension Officer - Macquarie | CottonInfo

M 0417 226 411 |

E [amanda.thomas@cottoninfo.net.au](mailto:amanda.thomas@cottoninfo.net.au) |

W | [www.cottoninfo.com.au](http://www.cottoninfo.com.au)

NOTICE: This email and any attachments are confidential to Cotton Seed Distributors Ltd. If you are not the intended recipient, you are not authorized to use or disclose this email or the attachments or any information in them; please tell the sender immediately by return email that you have received the email in error, and delete the email and its attachments from your computer.